

***Delphinium leucophaeum***

Ranunculaceae

pale larkspur, white rock larkspur



Gerald D. Carr



Kenton Chambers

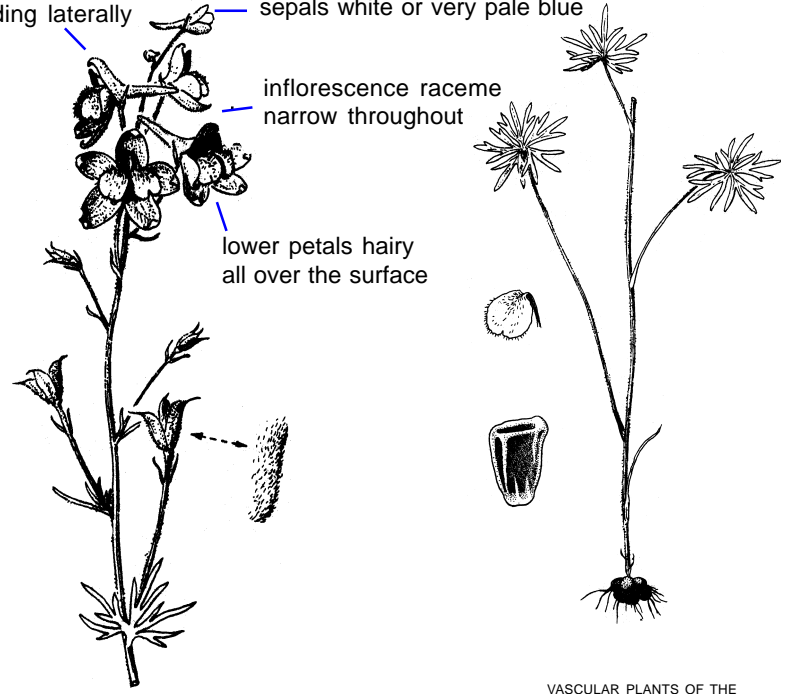
Karen Wallace



Gerald D. Carr



sepals cupped forward or spreading laterally — sepals white or very pale blue



inflorescence raceme narrow throughout

lower petals hairy all over the surface

VASCULAR PLANTS OF THE PACIFIC NORTHWEST (1964)  
Hitchcock & Cronquist,  
courtesy of University of Washington Press.

Slender perennial from a small cluster of globose to slightly fusiform tubers. **Stem** single, readily separating from the tubers, 20-60(100) cm tall, not at all fistulose, usually finely crisp-puberulent throughout. **Leaves** rather numerous, evenly distributed on the stem, long-petiolate, the lower ones with blades 3-6(10) cm broad, palmatifid into (usually) 5 main, narrowly oblong-cuneate, generally shallow lobes, the ultimate segments linear to narrowly lanceolate, 1-2(3) mm broad. **Inflorescence** simple to compound, open, the racemes 6- to 30-flowered, leafy-bracteate below; pedicels usually exceeding the spur and sometimes several times as long. **Flowers** with sepals from white to cream, sometimes slightly greenish-blue on the back, drying to yellowish with greenish or yellowish tips, crisp-puberulent, not glandular, widely flared, the lateral pair 9-14 mm long, oblong to ovate-oblong; spur 10-14 mm long; lower petals white (or faintly bluish-tinged), pilosa but not at all glandular, the blade broadly obovate, the sinus 1-1.5 mm deep; upper petals bluish-to lavender-tipped. **Follicles** 8-12 mm long, puberulent, not glandular; seeds 1.5-2 mm long, the angles conspicuously winged.

**Lookalikes**

*Delphinium pavonaceum*.....sepals +/-reflexed to spreading; lower petals with hairy tuft (peacock larkspur)

**Differ by**

at base of blade; inflorescence raceme wider below, narrowed above

best survey times  
J|F|M|A|M|J|J|A|S|O|N|D

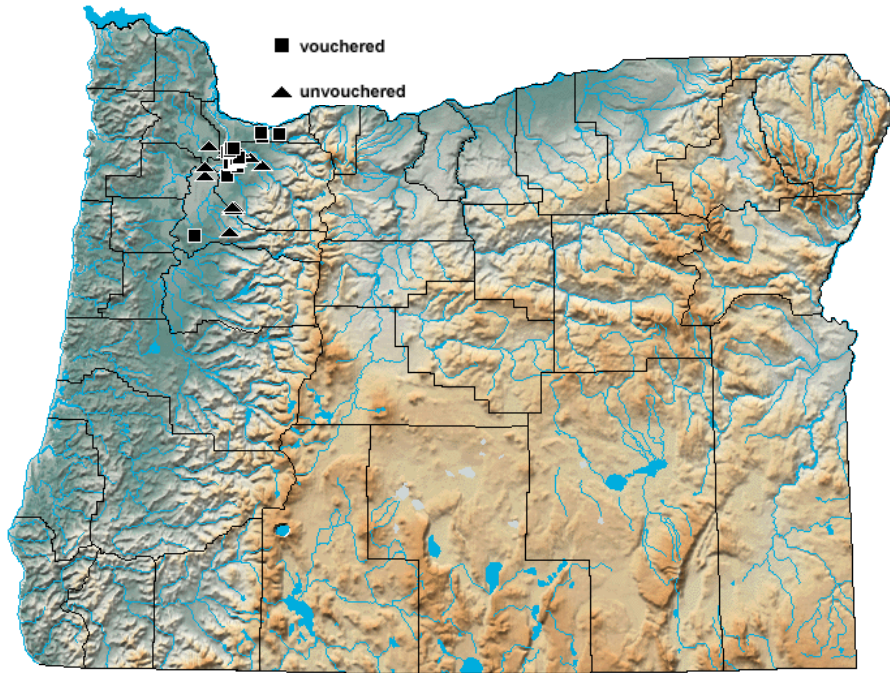


## *Delphinium leucophaeum* Greene

pale larkspur, white rock larkspur

PLANTS symbol: DELE

August 2019 status Federal: SOC; Oregon: LE; ORBIC: List 1



**Distribution:** Willamette Valley; Lewis Co., Washington.

**Habitat:** Dry bluffs and open ground, now restricted to ditches and fencerows; rocky basalt cliffs.

**Elevation:** 50-1050 feet

**Best survey time(in flower):**late May-early August

### **Associated species:**

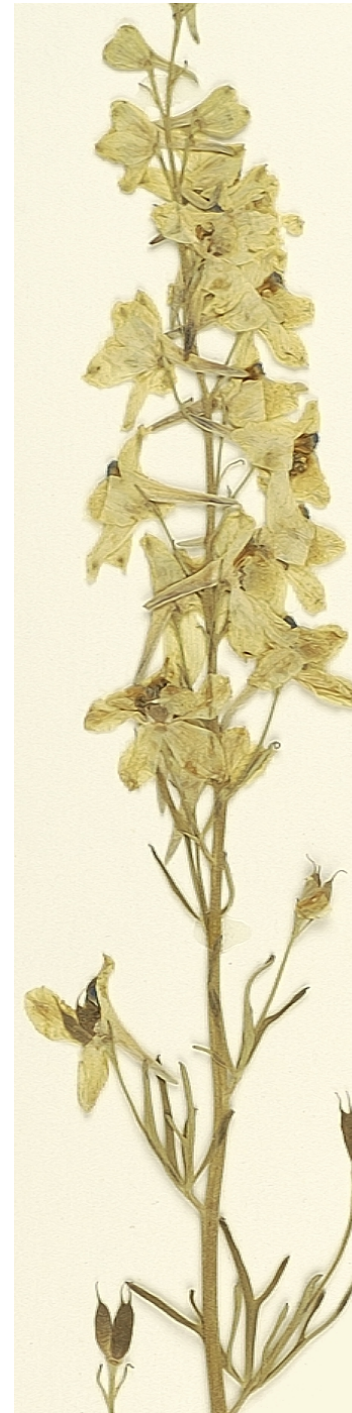
*Holodiscus discolor* (ocean spray)

*Philadelphus lewisii* (Lewis' mockorange)

*Symphoricarpos albus* (common snowberry)

*Toxicodendron diversilobum* (poison oak)

*Quercus garryana* (Garry oak)



1 cm



Oregon Flora

<https://oregonflora.org>

Published August 2019