

Lepidium davisii

Brassicaceae

Davis' peppergrass



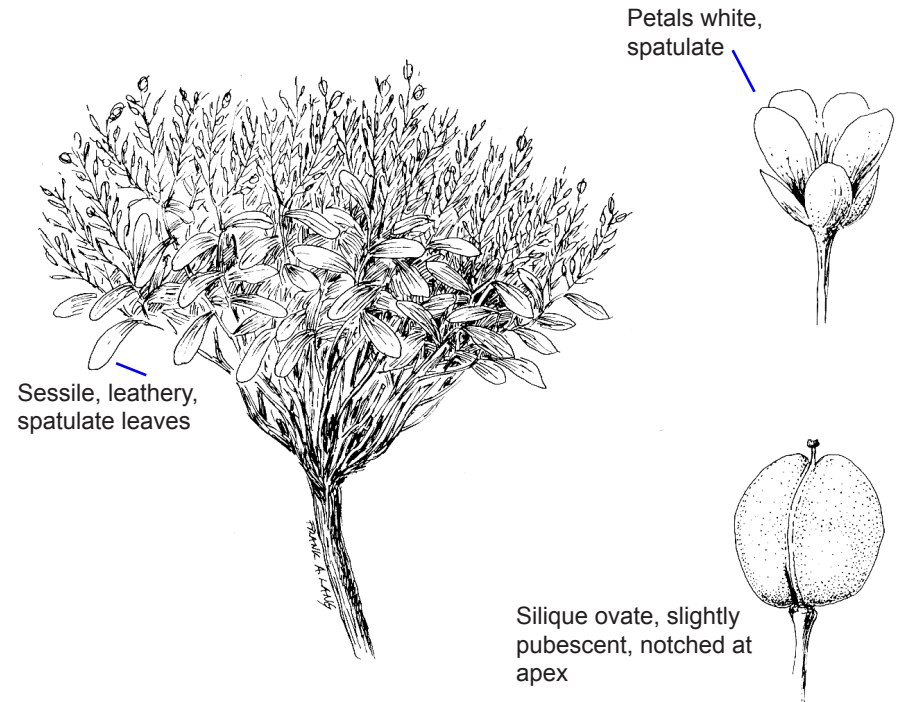
Thayne Tuason



Thayne Tuason



Thayne Tuason



Illustrated by Frank A. Lang
From: Threatened and Endangered
Vascular Plants of Oregon (1982)
R. J. Meinke

Caespitose, clump forming, perennial herb, from deep roots. Stems slender, numerous, rarely branched, 4-8 cm tall, terminated by an inflorescence. Leaves sessile, fleshy, leathery, spatulate, obtuse, greenish, sparsely pubescent to glabrous, 1-2.5 cm long, 2-5 mm wide. Flower petals white, spatulate, 2-3 mm long, about 1 mm wide; paired stamens slightly longer than single stamens. Fruit a silique, ovate, glabrous to slightly pubescent, slightly notched at apex, siliques crowded, 3-3.5 mm long, 2-2.5 mm wide.

Lookalikes

Lepidium montanum

Lepidium

differs from featured plant by

its less compact and woody habit and leaves that are not fleshy or leathery.
all other local *Lepidium* species are annual, differing from *L. davisii* which is perennial.

best survey times
J | F | M | A | M | J | J | A | S | O | N | D

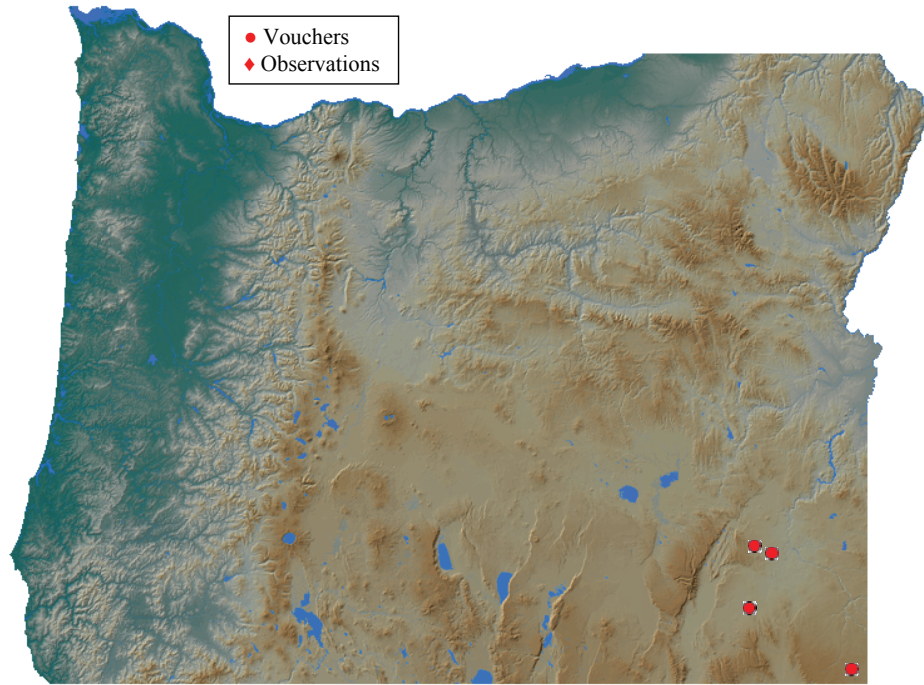


Lepidium davisii Rollins

Davis' peppergrass

PLANTS symbol: LEDA2

August 2019 status Oregon:LT; ORBIC: List 1



Distribution: Elko Co. Nevada, southwest Idaho and central and southern Malheur Co., Oregon.

Habitat: Clay playas

Elevation: 1100–1700 m

Best survey time (in flower): May – August

Associated species:

Astragalus calycosus (Torrey's milkvetch)

Allium anceps (Twinleaf onion)

Atriplex (Saltbush)



Oregon Flora

<https://oregonflora.org>

Published August 2019