

Lomatium ochocense

Apiaceae
Ochoco lomatium

Gerald D. Carr



Gerald D. Carr

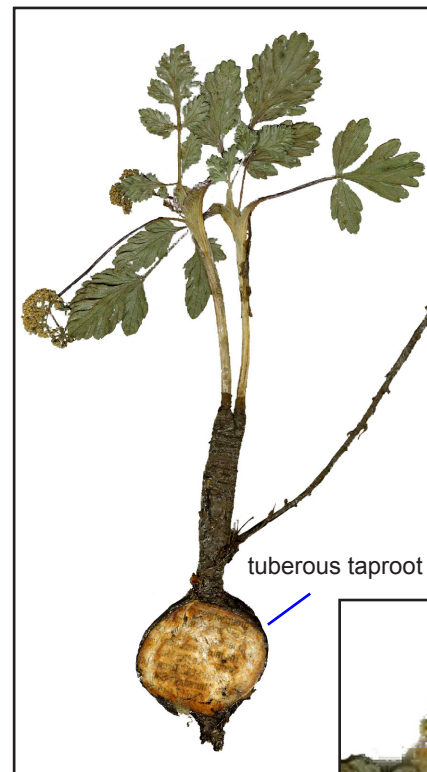


Richard Helliwell



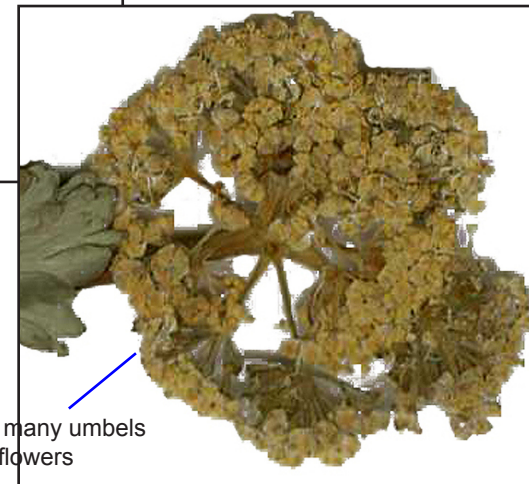
Richard Helliwell

leaf coarsely dissected



tuberous taproot

Photo of Helliwell 2313, unmounted specimen, UC Berkeley Herbarium



inflorescence of many umbels of small, yellow flowers

Plant from a tuberous taproot. **Leaves** thick, bluish-green, divided twice, but secondary divisions may be obscure. **Inflorescence** is many umbels of small, yellow flowers on stout flowering stems up to 7mm thick and 15-20 cm tall; umbel has few connate bractlets at the base, concentrated on one side of the stem. **Fruits** are generally smooth and winged, 8-9 mm long and 4-5 mm wide.

Lookalikes

Lomatium cous

differs from featured plant by

its deeper green, more carrot-like leaf and its strongly leafy flower bracts.

Lomatium leptocarpum

its finely-dissected leaves with many small ultimate segments, and nearly linear fruits.

Lomatium farinosum

its more finely divided leaves with long, linear ultimate segments.

best survey times
J | F | M | A | M | J | J | A | S | O | N | D

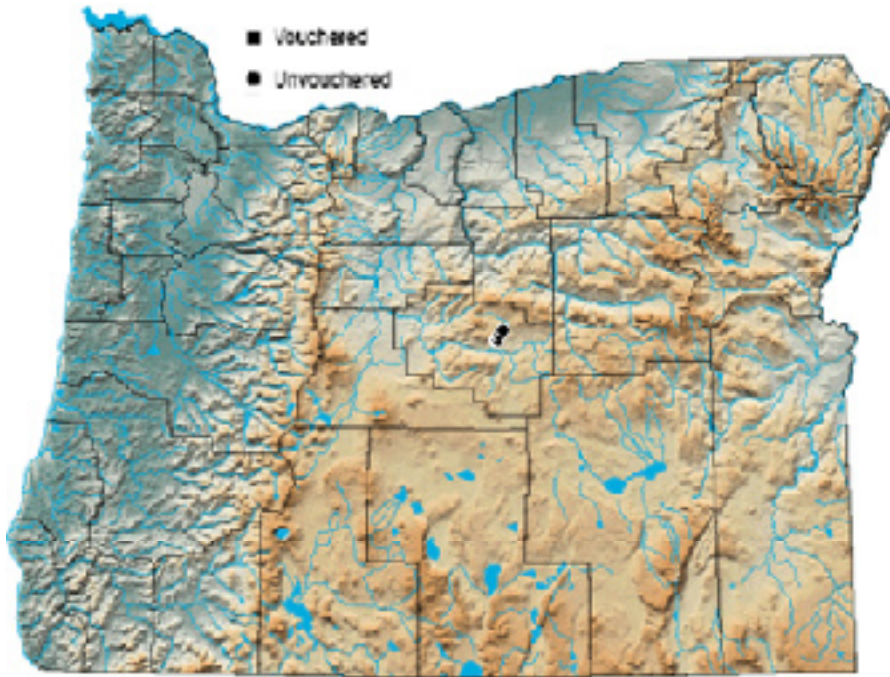


Lomatium ochocense Helliwell & Constance in ed.

Ochoco lomatium

PLANTS symbol: LOOC2

August 2019 status ORBIC: List 1



Distribution: Found in the Ochoco Mountains, near the North Fork Crooked River, in Crook County, Oregon.

Habitat: Dry, rocky, shallow soils.

Elevation: 1300–1500 m

Best survey time (in flower): April to June

Associated species:

Poa secunda (Sandberg bluegrass)

Artemisia rigida (Stiff sagebrush, Scabland sagebrush)

Danthonia unispicata (Onespike danthonia, Few flowered wild oatgrass)

Lomatium cous (Cous)

Achnatherum hendersonii (Henderson's ricegrass)

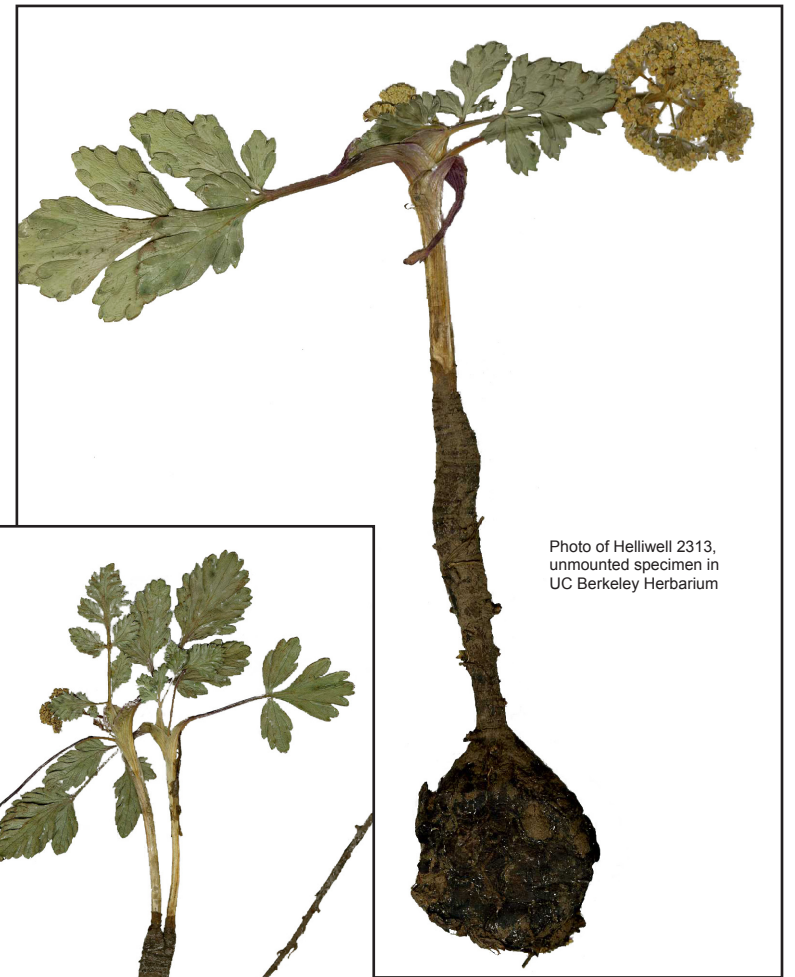


Photo of Helliwell 2313, unmounted specimen in UC Berkeley Herbarium

