

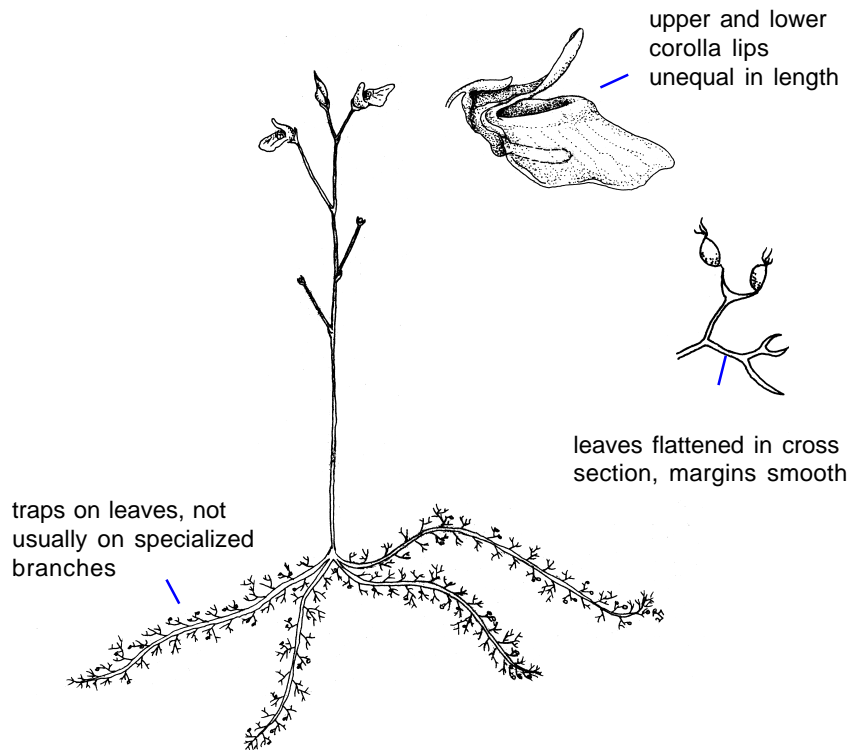
Utricularia minor

Lentibulariaceae
lesser bladderwort

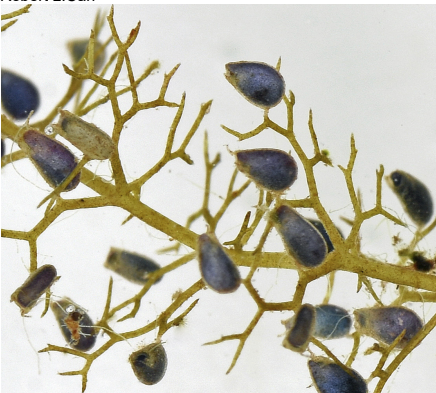
Tanya Harvey



Tanya Harvey



Robert L.Carr



Scott Sundberg



Carnivorous herbs; aquatic or emergent; winter buds subglobose, 2-4 mm long, glabrous. **Stems** slender, floating; branches zigzagging, 15-75 cm long, or creeping along bottom of pond; small, leathery, brown-tinged, deeply divided remnants of winter buds often present. **“Leaves”** alternate, 2-10 mm long, dichotomously divided into 2-17 ultimate segments; ultimate segments acute to acuminate. **Bladders** on leaves 2-4 per leaf, 1.5-2.0 mm long, 0.7-1.5 mm wide. **Inflorescence** a raceme, 2-10-flowered; peduncle rising above the water, 5-15 cm long, pedicels recurved after anthesis. **Flower** corolla yellow, the tube short; lips unequal; upper lip 2-4 mm long; lower lip 5-7.5 mm long, 4-4.5 mm wide; spur small, saccate, 1-2 mm long.

Lookalikes differs from featured plant by
Utricularia ochroleuca leaf margins bristly
(buff bladderwort)

U. gibba leaves threadlike, round in cross section, upper lip
(humped bladderwort) of corolla equaling the lower

best survey times
J | F | M | A | M | J | J | A | S | O | N | D

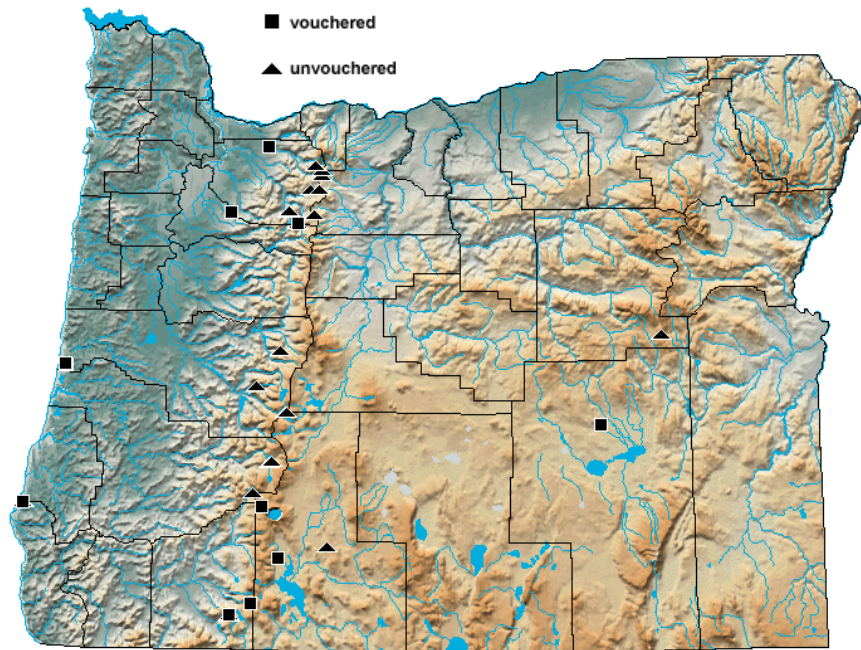


Utricularia minor L.

lesser bladderwort

PLANTS symbol: UTMI

August 2019 status ORBIC: List 2



Distribution: Widespread in Oregon; Washington; Idaho; Nevada; California; Colorado; eastern North America; circumboreal.

Habitat: ponds, slow-flowing streams.

Elevation: 0-50,2100-5500 feet

Best survey time(in flower): (plants relatively large): May-October



Oregon Flora

<https://oregonflora.org>

Published August 2019